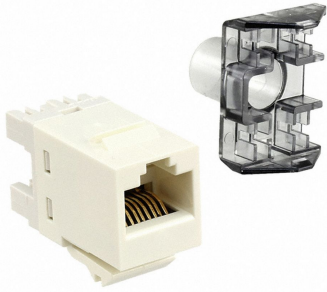


1-1375055-3



SL110 Series Modular Jack, RJ45, category 6, T568A/T568B, unshielded, without dust cover, alpine white

Product Classification

Regional Availability

Asia | Australia/New Zealand | EMEA | Latin America

Portfolio

NETCONNECT®

Product Type

Modular jack

Product Series

SL Series

General Specifications

ANSI/TIA Category

6

Cable Type

Unshielded

Color

Alpine white

Conductor Type

Solid | Stranded

Integrated Dust Cover Type

None

Mounting

SL Series faceplates and panels

Mounting Note

Color matches with SL-style Alpine white or Pro white
Faceplates and Surface Mount Boxes

Outlet Feature

Inverted jack face

Outlet Type

Standard

Termination Punchdowns, minimum

200 times

Termination Tool

SL Termination tool

Termination Type

IDC

Transmission Standards

ANSI/TIA-568.2-D | ISO/IEC 11801 Class E

Wiring

T568A | T568B

Dimensions

Panel Cutout, recommended

14.78 x 20.07 mm (0.58 x 0.79 in)

1-1375055-3

Panel Thickness, recommended	1.6 mm 0.063 in
Height	16.13 mm 0.635 in
Width	14.48 mm 0.57 in
Depth	30.48 mm 1.2 in
Compatible Cable Diameter, maximum	5.8 mm 0.228 in
Compatible Insulated Conductor Diameter, maximum	1.45 mm 0.057 in
Contact Plating Thickness	1.27 μ m
Compatible Conductor Gauge, solid	24–22 AWG
Compatible Conductor Gauge, stranded	26–24 AWG

Electrical Specifications

Contact Resistance Variation, maximum	20 mOhm
Contact Resistance, maximum	100 mOhm
Current Rating at Temperature	1.5 A @ 20 °C 1.5 A @ 68 °F
Dielectric Withstand Voltage, RMS, conductive surface	1,500 Vac @ 60 Hz
Dielectric Withstand Voltage, RMS, contact-to-contact	1,000 Vac @ 60 Hz
Insulation Resistance, minimum	500 mOhm
Remote Powering	Fully supports the safe delivery of power over LAN cabling described by IEEE 802.3bt (Type 4) and complies with the unmating under electrical load requirements prescribed by IEC 60512-99-002
Safety Voltage Rating	150 Vac

Material Specifications

Contact Base Material	Beryllium copper
Contact Plating Material	Gold
Material Type	Polycarbonate
Termination Contact Plating	Tin

Mechanical Specifications

Plug Insertion Life, minimum	750 times
Plug Insertion Life, test plug	IEC 60603-7 compliant plug
Plug Retention Force, minimum	50 N 11.24 lbf

Environmental Specifications

1-1375055-3

Operating Temperature	-10 °C to +60 °C (+14 °F to +140 °F)
Flammability Rating	UL 94 V-0
Safety Standard	UL cUL

Packaging and Weights

Included	Strain relief cap
Packaging quantity	1
Packaging Type	Bag

Regulatory Compliance/Certifications

Agency	Classification
CHINA-ROHS	Below maximum concentration value
RCM	Compliant to electrical safety, EMC, EME & telecommunications requirements
REACH-SVHC	Compliant as per SVHC revision on www.commscope.com/ProductCompliance
ROHS	Compliant

